

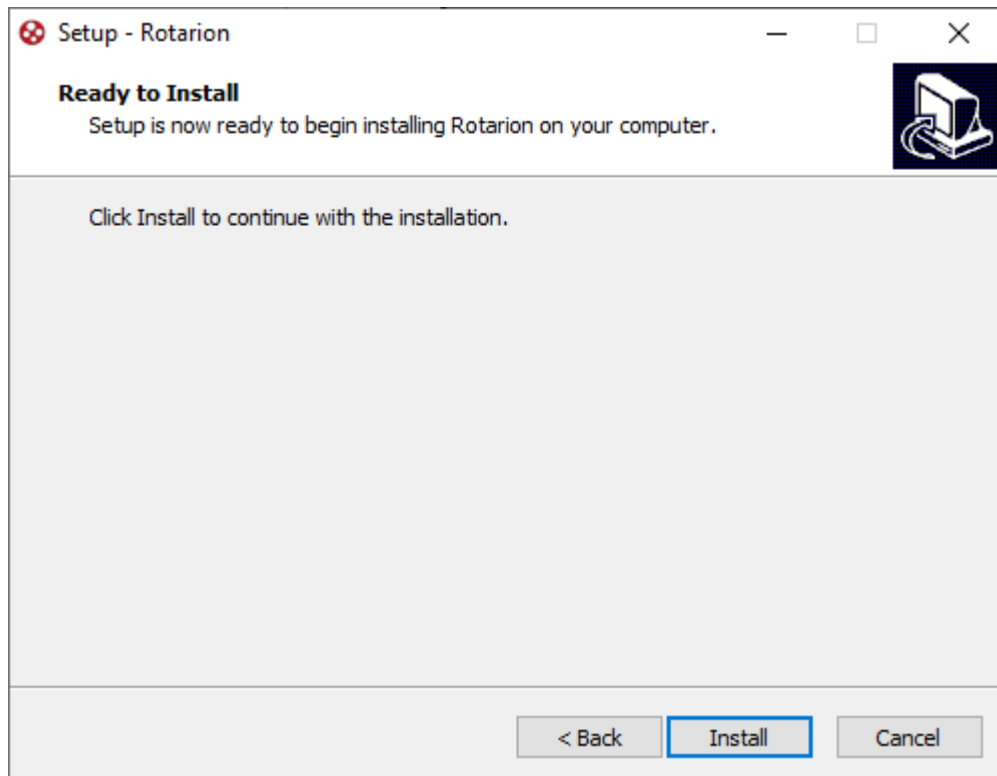
Rotarion ASCOM driver  
(draft user manual)

Foreword:

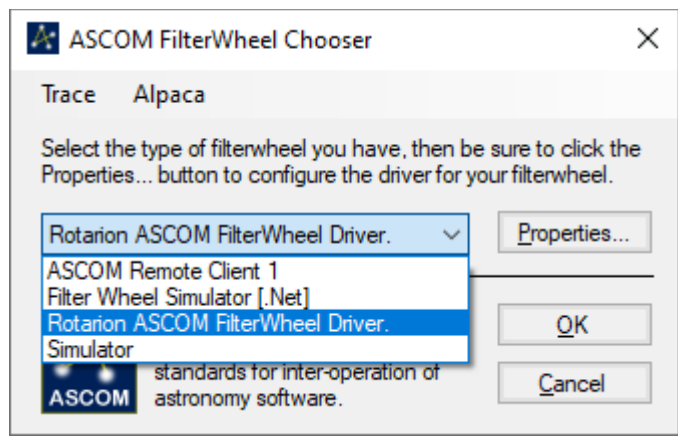
The Rotarion ASCOM interface has been developed as a filter wheel; to allow the use of a true filter wheel between the Rotarion and the telescope, this driver can connect to an additional wheel and combine the positions.

Step by step:

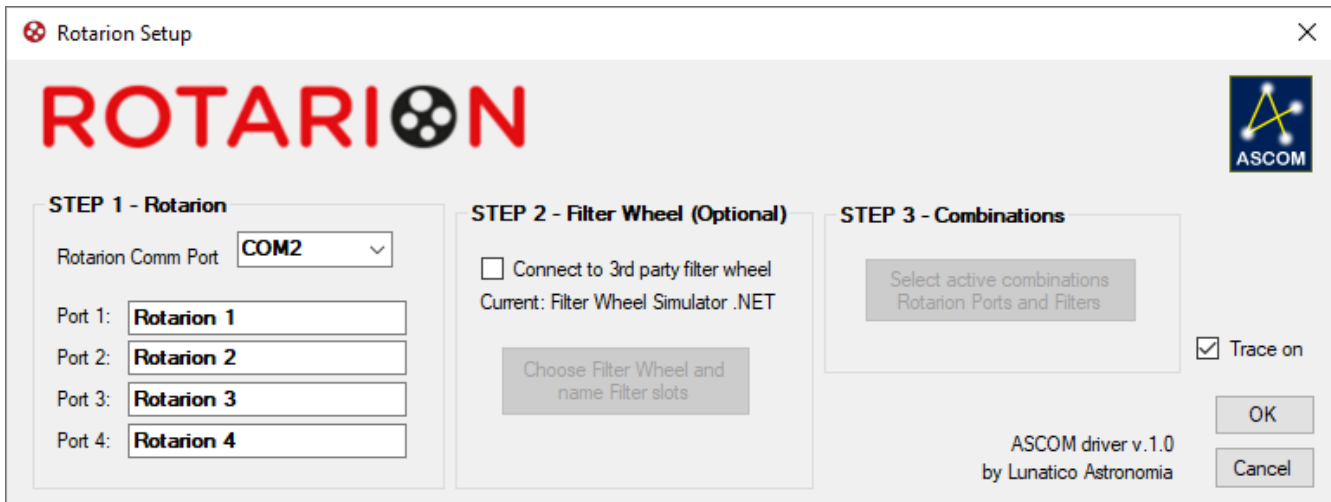
Download the [ASCOM driver](#) and execute; it will follow a typical installation process.



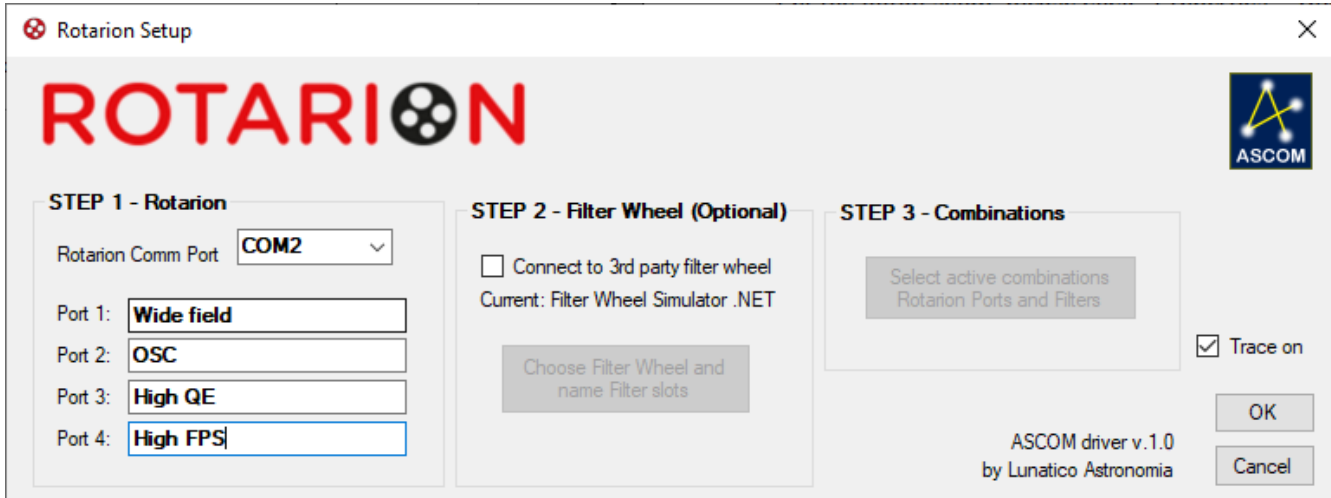
Once installed, your Rotarion driver will be available from any ASCOM filter wheel selection window:



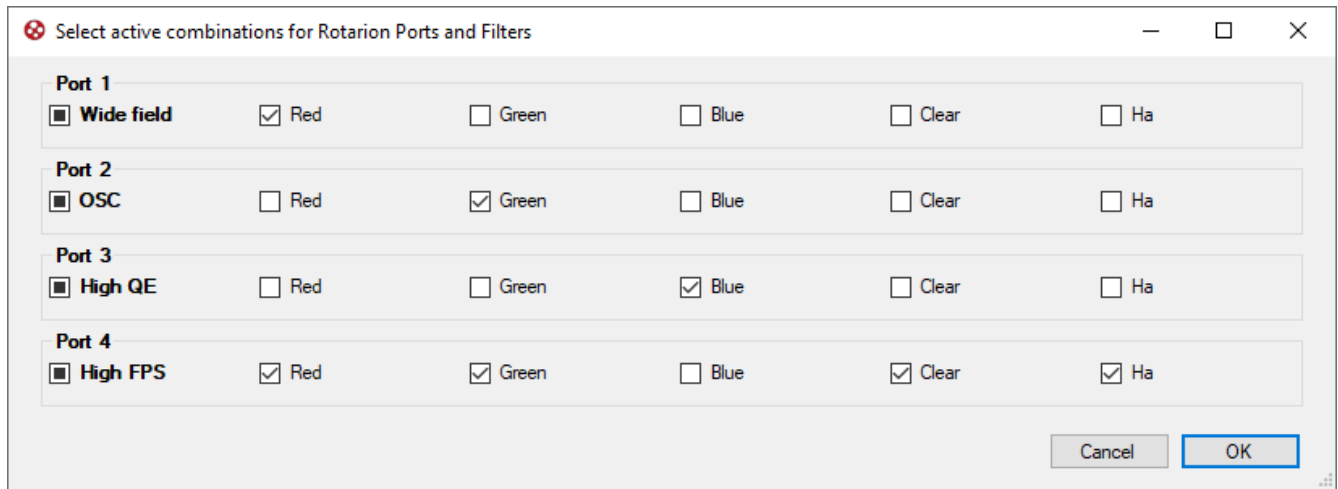
For the initial setup, please click “Properties”; you’ll reach the main Rotarion ASCOM setup window:



Select the correct Comm port (only those present in the system will be available) and optionally name every slot in the Rotarion, to better identify them.



If you are going to use the additional filter wheel, select so, choose the correct one (NOTE: do not choose the Rotarion at this step!) and then goto to “Combinations”:



From this window, you will be able to select which combinations make sense in your system.

The idea behind this is to make it easier, later when choosing filters, to limit the number of options to only those who can potentially be chosen. It is extremely easy to select them all, if that's what you want to do.

Once selected, from your imaging or session program, only the active ones will be available.

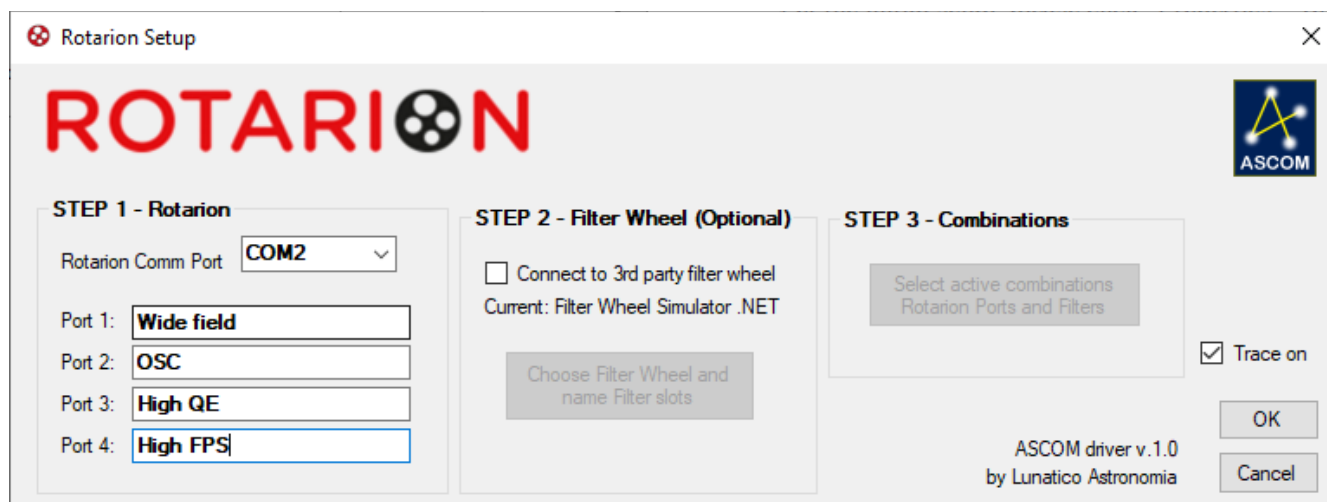
In the example above, the list will read:

- Wide field – Red
- OSC – Green
- High QE – Blue
- High FPS - Red
- High FPS - Green
- High FPS - Clear
- High FPS – Ha

The driver will move both the Rotarion and the filter wheel following the commands of the imaging program.

Troubleshooting:

Should you encounter any problem, please select “Trace on” from the setup window:



This will generate a log file (you can find it from your “Documents” folder, ASCOM; there will be a log folder for each day) that will help troubleshooting.